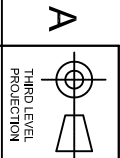


IF IN DOUBT ALWAYS ASK

NEXT HIGHER ASSY



**J1 - Mains Input**

- Housing - Part # - 0010013036
- 5.08mm (0.200"), 3Way Housing with Friction Lock
- or any direct equivalent
- Terminal - Part # - 0008701031
- Molex
- Crimp terminal, 18-24 AWG
- or any direct equivalent

**J2 - Global Signal**

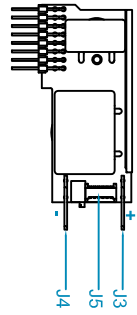
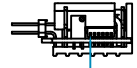
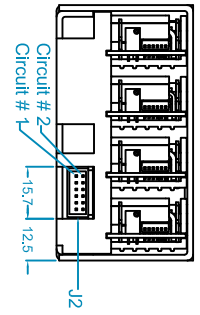
- Housing - Part # - 0511101260
- 2.00mm (0.079"), 12Way Housing with Friction Lock
- or any direct equivalent
- Housing - Part # - 0875681273
- Molex
- 2.00mm (0.079"), 12Way IDT Housing with Lock
- or any direct equivalent
- IDT - Part # - 0503948051
- Molex
- Crimp terminal, 24-30 AWG
- or any direct equivalent

**J3/J4 - Output Power Terminal**

- Terminal - Various
- Tab size - 0.80mm x 6.35mm
- Crimp terminal must have current rating higher than short circuit current of output module e.g. Isc OP 1 = 25Amp \* 1.25 = 31.25Amp
- Always use appropriate wire size, see Instruction Manual

**J5 - Output Signal**

- Housing - Part # - 01510210600
- Molex
- 1.25mm (0.049"), 6Way Housing
- or any direct equivalent
- Terminal - Part # - 050058800
- Molex
- Crimp terminal, 28-32 AWG
- or any direct equivalent



**J2 - Global Signal**

- | Pin | Signal                   |
|-----|--------------------------|
| 1   | Module Power Good Slot A |
| 2   | Module Inhibit Slot A    |
| 3   | Module Power Good Slot B |
| 4   | Module Inhibit Slot B    |
| 5   | Module Power Good Slot C |
| 6   | Module Inhibit Slot C    |
| 7   | Module Power Good Slot D |
| 8   | Module Inhibit Slot D    |
| 9   | Global Inhibit           |
| 10  | AC OK                    |
| 11  | Global Bias Supply +5V   |
| 12  | GND                      |

**J5 - Output Signal**

- | Pin | Signal  |
|-----|---|
| 1   | + Sense                                       |
| 2   | - Sense                                       |
| 3   | Voltage Control                               |
| 4   | Current Out / Current Control / Current Share |
| 5   | GND   |
| 6   | Module Bias Supply +5V                        |

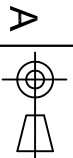
NOTES:

DOCUMENT NO.		NEVO PLUS - 2D MECHANICAL DRAWING	
MEC6027			
MATERIAL		FINISH	
N/A		N/A	
TOLERANCES unless otherwise stated - All dimensions in mm, and according to DIN 2768-1/-2 CLASS F		SCALE - A3	
		Not to scale	
		01 of 02	

REV	SIGNED	DATE	CN #
00	M.P.	08-10-2009	

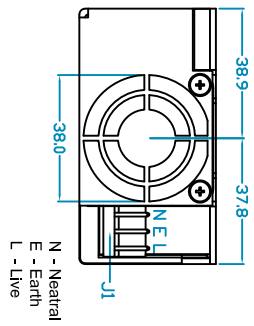


1 2 3 4 5 6 7 8 9 10 11 12 13 14 15 16 17

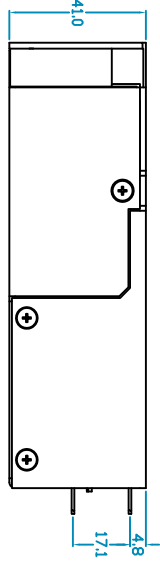


IF IN DOUBT ALWAYS ASK

NEXT HIGHER ASSY



N - Neutral  
E - Earth  
L - Live



**SCREWS:**

**MH1, MH2, MH3, MH4, MH5**

Screw type - M4  
Tightening - Tighten to 1.5 N.m torque  
Penetration depth - 4.00mm max including chassis

**OUTPUT MODULES x 8**

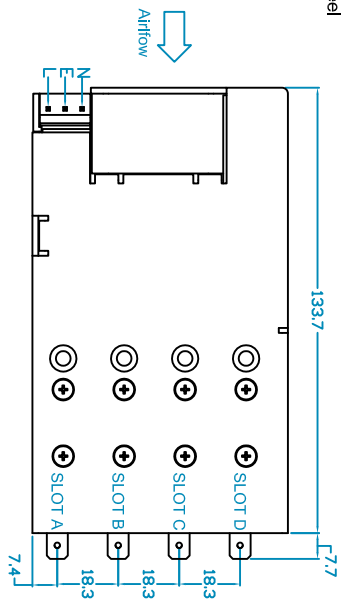
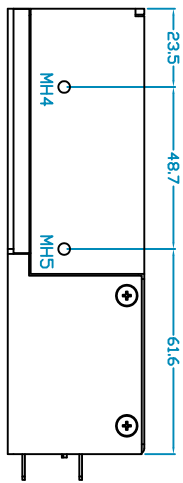
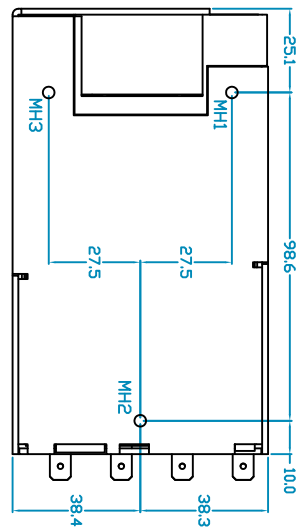
Screw type - M3 x 5, C/sink, Posi, Stainless Steel  
Tightening - Tighten to 0.75 N.m torque  
Penetration depth - Defined by screw

**CHASSIS x 5**

Screw type - M3 x 5, C/sink, Posi, Stainless Steel  
Tightening - Tighten to 0.75 N.m torque  
Penetration depth - Defined by screw

**FAN x 2**

Screw type - M3 x 24, C/sink, Posi, Stainless Steel  
Tightening - Tighten to 0.75 N.m torque  
Penetration depth - Defined by screw



NOTES:

This document and its contents are the copyright property of VOX POWER Ltd. and may not be copied in whole or in part without written permission from VOX POWER Ltd.

DOCUMENT NO.

MEC6027

MATERIAL

N/A

NEVO PLUS - 2D MECHANICAL DRAWING

FINISH

N/A

SCALE - A3  
NO of SHTS  
Not to scale 02 of 02

REV

00

M.P.

08-10-2009

SIGNED

DATE

CN #

TITLE



A

A

B

B

C

C

D

D

E

E

F

F

G

G

H

H

I

I

J

J

K

K

L

L

1 2 3 4 5 6 7 8 9 10 11 12 13 14 15 16 17